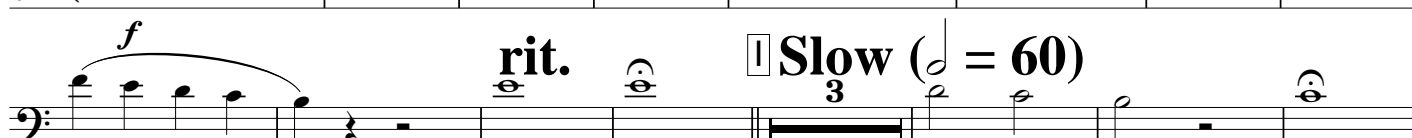
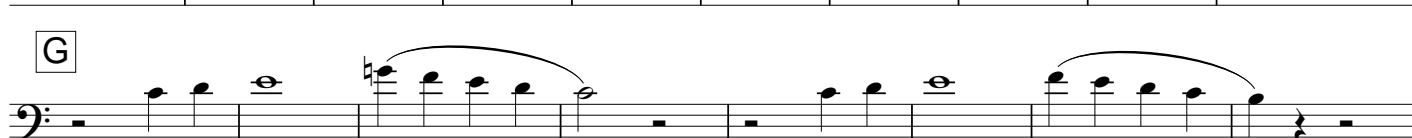
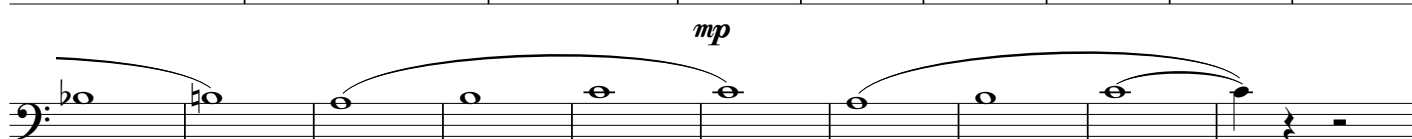
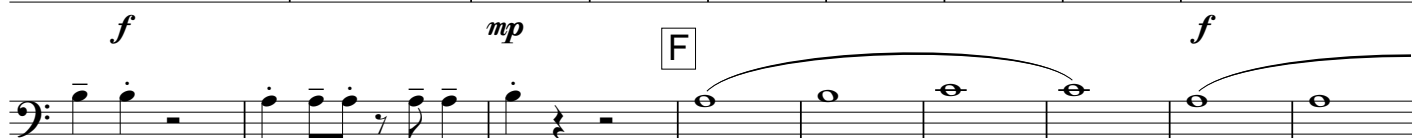
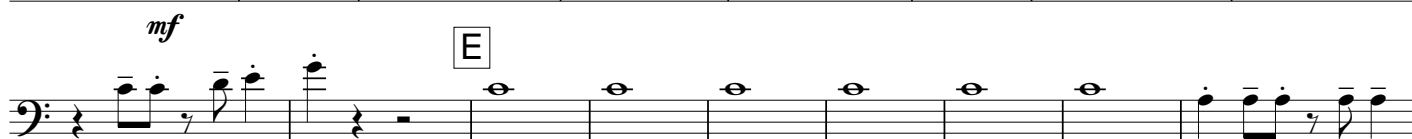
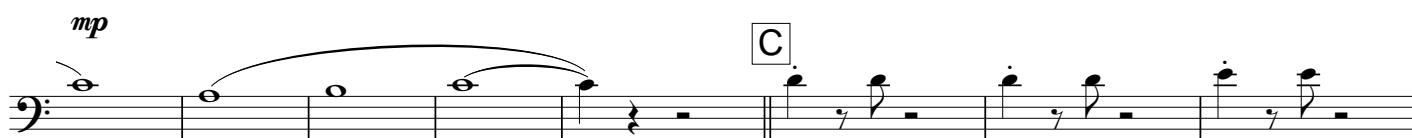


EDERS KEER

Comp. Gé Reinders
arr. Peter Kleen
Kleine Schaars

A Fast Swing (♩ = 104)



mp

f

mf

The image displays three staves of musical notation in bass clef. The first staff begins with a dynamic marking of *mp* and contains a sequence of eighth notes, a half note, and two eighth notes with accents, ending with a dynamic marking of *f*. The second staff contains eighth notes with accents, a quarter note with an accent, and half notes, marked *mf*. The third staff contains eighth notes with accents, a half note, and a phrase with a slur and accents, ending with a double bar line.